



ASO VISUAL ABSTRACT

ASO Visual Abstract: Adjuvant External Beam Radiotherapy Reduces Local Recurrence in Poorly Differentiated Thyroid Cancer

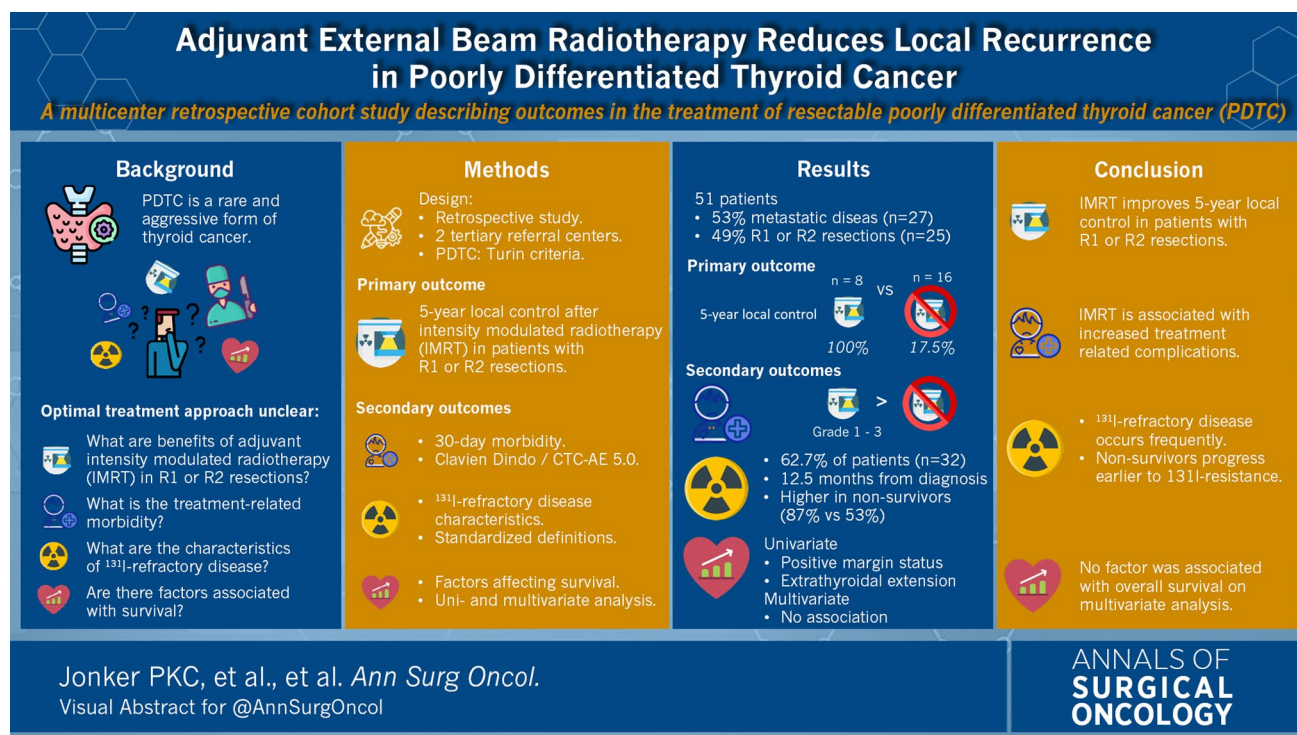
A Multicenter Retrospective Cohort Study Describing Outcomes in the Treatment of Resectable Poorly Differentiated Thyroid Cancer

Pascal K. C. Jonker, MD^{1,5}, Jan H. Koetje, MD, PhD⁵, John Turchini, BMedSc, MBBS, FRCPA^{4,6,7}, Jia Feng Alex Lin, BSc^{1,5}, Anthony J. Gill, MD, FRCPA^{4,8,9}, Thomas Eade, MD³, Ahmad Aniss, MSc, PhD¹, Roderick Clifton-Bligh, MD, PhD^{2,4}, Bettien M. van Hemel, MD, PhD¹⁰, Diana Learoyd, MBBS, FRACP, PhD^{2,4}, Hans H. G. Verbeek, MD, PhD¹¹, Thera P. Links, MD, PhD¹², Bruce Robinson, MD, MSc, FRACP^{2,4}, Venessa Tsang, MBBS, BSc (Med), FRACP, PhD^{2,4}, Stanley Sidhu, MD, FRACS, PhD^{1,4}, Schelto Kruijff, MD, PhD⁵, and Mark S. Sywak, MBBS, FRACS, MMed Sci^{1,4}

¹University of Sydney Endocrine Surgical Unit, Royal North Shore Hospital, Northern Sydney Local Health District, St Leonards, Australia; ²Department of Endocrinology, Royal North Shore Hospital, Northern Sydney Local Health District, St Leonards, Australia; ³Department of Radiation Oncology, Royal North Shore Hospital, Northern Sydney Local Health District, St Leonards, Australia; ⁴Northern Clinical School, Sydney Medical School, Faculty of Medicine and Health, University of Sydney, Sydney, Australia; ⁵Department of Surgery, Division of Surgical Oncology, University Medical Center Groningen, University of Groningen, Groningen, The Netherlands; ⁶Douglass Hanly Moir Pathology, Macquarie Park, Australia; ⁷Discipline of Pathology, MQ Health, Macquarie University, Macquarie Park, Australia; ⁸NSW Health Pathology Department of Anatomical Pathology, Royal North Shore Hospital, Northern Sydney Local Health District, St Leonards, Australia; ⁹Cancer Diagnosis and Pathology Group, Kolling Institute of Medical Research, Royal North Shore Hospital, Northern Sydney Local Health District, St Leonards, NSW, Australia; ¹⁰Department of Pathology, University Medical Center Groningen, University of Groningen, Groningen, The Netherlands; ¹¹Department of Radiotherapy, University Medical Center Groningen, University of Groningen, Groningen, The Netherlands; ¹²Department of Internal Medicine, Division of Endocrinology, University Medical Center Groningen, University of Groningen, Groningen, The Netherlands

Postoperative intensity-modulated radiotherapy improves 5-year local control in patients with poorly differentiated thyroid carcinoma and positive resection margins (PDTc),

but increased complications. ¹³¹I-refractory disease, occurring in most cases, is more common in nonsurvivors (<https://doi.org/10.1245/s10434-025-17434-2>).



DISCLOSURE Roderick Clifton-Bligh received speaking honoraria from AMGEN, EISAI, Kyowa Kirin; and is on advisory boards for Kyowa Kirin, Ipsen, Specialized Therapeutics, and Lilly.

Publisher's Note Springer Nature remains neutral with regard to jurisdictional claims in published maps and institutional affiliations.